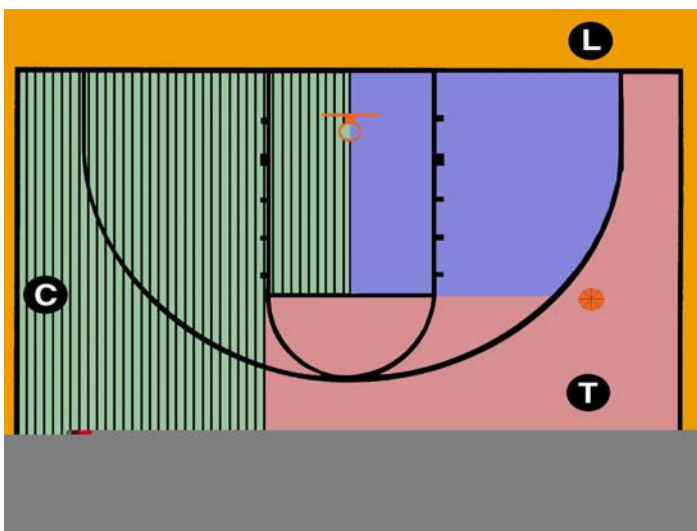


## Primary Coverage Areas

Both C and T should close down on shots



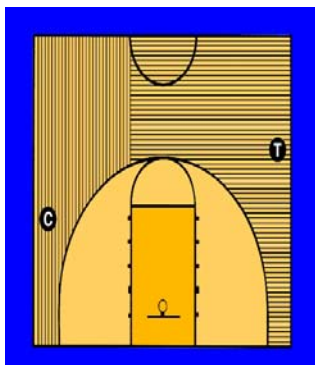
## Court Coverage

- The Trail official has primary responsibility for the area above the free-throw line extended to the far lane line extended and outside the three-point arc to the end line.
- Initial starting position for Trail should be approximately the 28 foot line.
- The Center official has primary responsibility for the area from the near lane line extended to the near sideline and the near half of the key area.
- Initial starting position for Center should be free throw line extended
- The Lead official has primary responsibility for the near half of the key area and inside the arc below the free-throw line extended.
- Initial starting position for Lead should be half way between the three point line and the nearest lane line.
- Both C and T should close down on shots

## Rotation Sequence

- Ball location keys the rotation.
- The Lead can facilitate smooth rotations by moving along the end line and mirroring the location of the ball (outside the key area).
- When the ball penetrates the free-throw lane line extended nearest to the Center, the Lead should be closed down and may move laterally (rotate) to ball side.
- The Trail also closes down when the ball penetrates the free-throw lane line extended nearest to the Center.
- Center completes the rotation by backing out and becoming Trail, but is the last to rotate.
- During a rotation, there may temporarily be two Centers, but there should never be two Trails.
- The Lead should only rotate when all three officials are in the frontcourt.

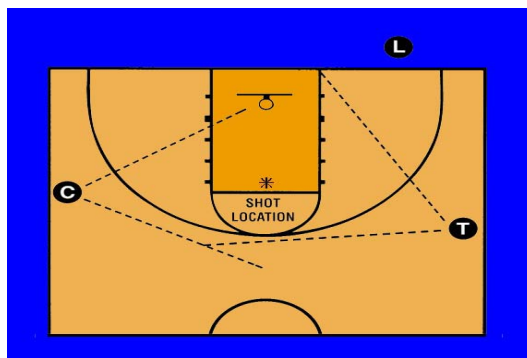
## Three-Point Shot Coverage



- If both C and T indicate the 3-pt attempt, T should referee the defense on the shooter and stay with the shot; C should release and cover rebounding
- C/T should mirror the other official's "good" signal

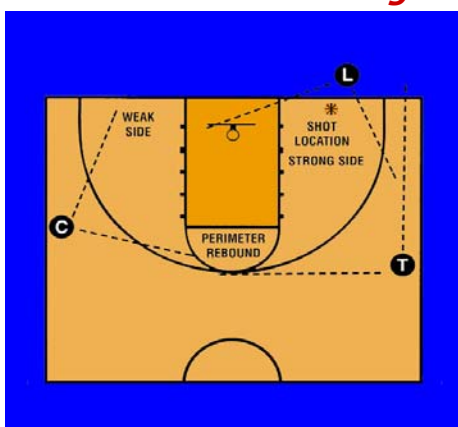
Note: L does not have 3-pt attempt responsibilities in a front court offense, but may need to offer assistance on fast break.

## Shot & Rebound



If shooter is in your area, you must referee the defense and bring the shooter back to the floor.

## Shot & Rebound Coverage



- Lead should not be positioned within lane lines
- Both C and T should close down on shots
- C is primarily responsible for weak side rebounding

